



VERANDA

PART OF OUR
OUTDOOR LIVING RANGE
COLLECTION

INSTALLATION GUIDE

CONTENTS.

INTRODUCTION	3
TOOLS REQUIRED	4
STRUCTURE AND OPTIONS	5
VERANDAH INSTALLATION	6
VERANDAH INSTALLATION	8
VERANDAH INSTALLATION	10

INTRODUCTION

This universal guide provides a general overview of the installation of the **GFD Homes** Verandah. Due to the nature of bespoke installations, any areas or details not covered in this guide can be discussed with our technical support team on **01642 309 576**.

This guide is written on the basis that an accurate site survey has been undertaken. Please take a moment to read through this guide and the 'Verandah Technical Guide' prior to assembly.

All feedback is welcome.

You will be supplied with a clearly marked location plan. Please refer to these plans when requested to ensure measurements and components all relate.

Please take care when handling painted product as surfaces may become scratched. Prior installation please open all packs and inspect for damaged or missing goods, and report any issues to our Customer Care department.

Important Note:

When sealing the roof please use the correct sealant.

For roofs glazed with standard sealed units a low modulus neutral cure brand must be used. For roofs with true self-cleaning glass an MS polymer sealant such as Rotabond must be used.

TOOLS REQUIRED.



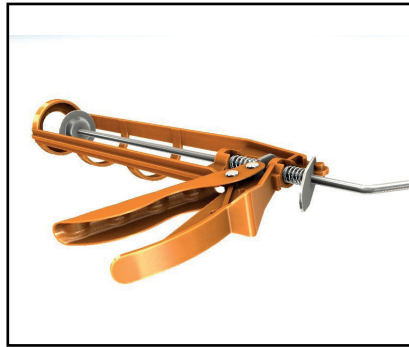
Battery/Drill Driver



5.5mm, 9mm & masonry drill bits



No. 2 Pozidriv bit



Silicone Gun



Nylon Mallet



Tape Measure



10mm T Spanner



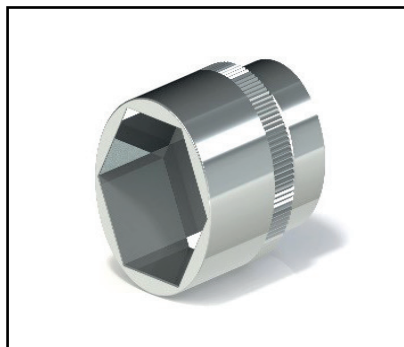
Craft Knife



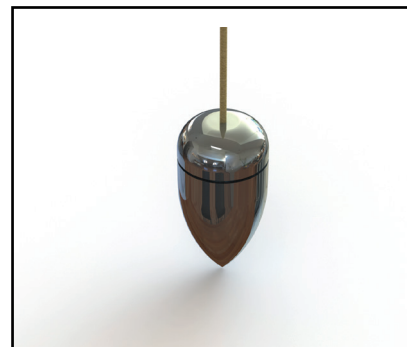
Spirit Level



Angle Finder



17mm Socket



Plumb Line

STRUCTURE AND OPTIONS.

Verandah has a maximum projection of 4m on to the eaves, restrictions may apply on steeper pitches to ensure glass sizes don't require splitting.

Min - Maximum post centres of 1.02m - 3m (round post).

Min - Maximum cantilever from post centres 0.51m - 1.05m

Option at eaves for gutter and downpipe or 250mm overhang with no gutter.

Available in any RAL colour, (prices and lead times may vary).

Glazing options - 24mm double glazed units (neutral, blue, aqua).



FOOT OPTIONS



FOOT OPTION 1 - Post Only



FOOT OPTION 2 - Decorative Foot



FOOT OPTION 3 - Decorative Tall Collar



FOOT OPTION 4 - Decorative Foot and Tall Collar



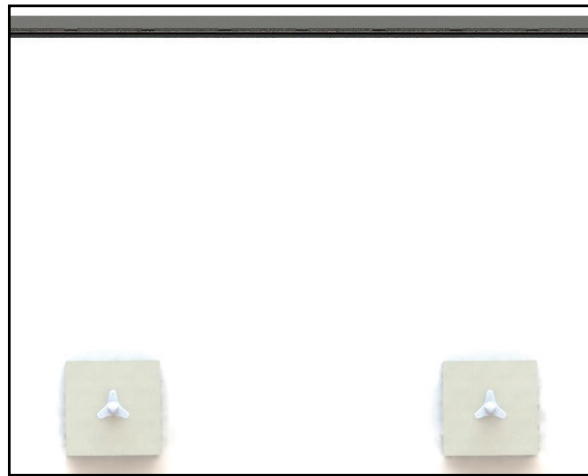
FOOT OPTION 5 - Square Post

Sealing

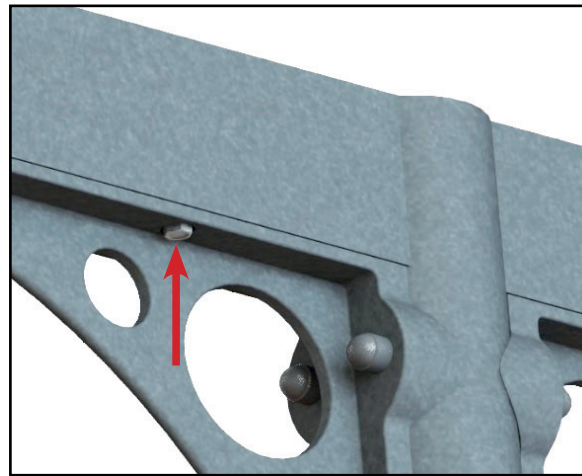
It is important to use the correct sealant when sealing the roof.

Roofs glazed with standard sealed units, low modulus neutral cure brand of silicone must be used. Roofs glazed with 'Self Cleaning Glass', MS Polymer sealant such as Rotabond 2000 must be used.

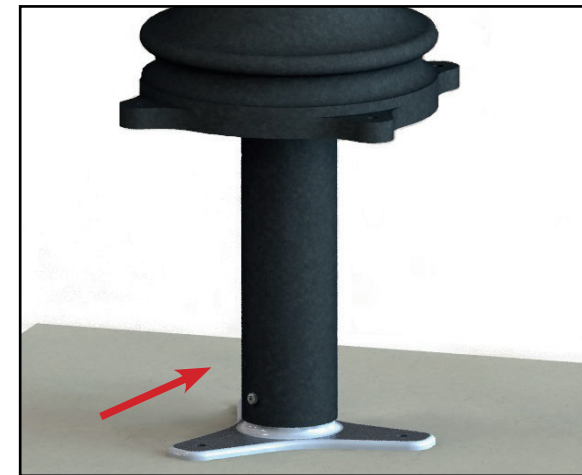
INSTALLATION STEPS.



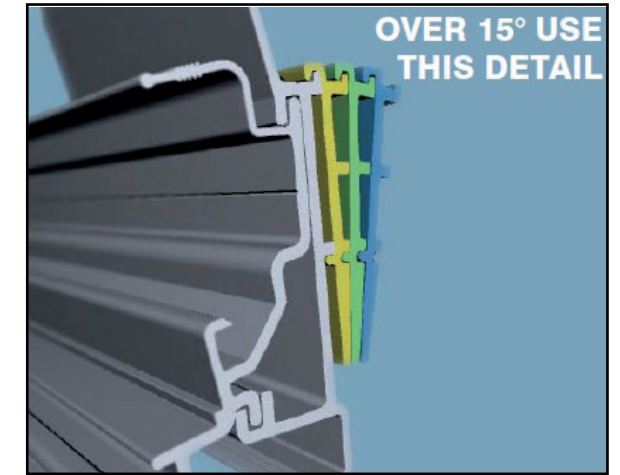
Prior installation it is recommended marking the floor with the projection and positions of the support post (centres).



The gallows, and support posts are usually factory assembled. The eaves beam is supplied pre-drilled on the underside. Line up the support post on the eaves and fix using M8 x 16mm Taptite bolts supplied (4 per bracket). These may already be supplied loosely fastened. Cover using domed caps supplied.



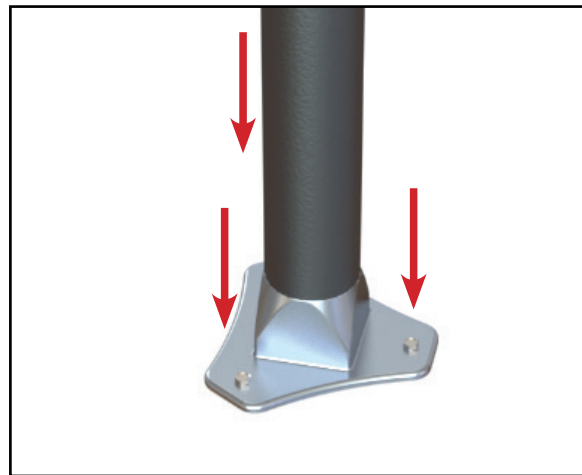
Please note if decorative foot option is being used they will need to be slid on to post and secured out of the way prior to securing post in place. It is recommended applying protective tape to the support post to prevent any damage to the painted surface when sliding the parts. Ensure goal post is plumb and level.



On Verandah pitches over 15° the wall plate will be supplied with packers. Hook packers onto the back of the wall plate and thereafter, to the back of each packer to create a wedge between the host wall and the wall plate. Each packer adds an extra 5° to the pitch of the roof.



When assembling, ensure the notched section of the support post is to the inside of the eaves beam (Bolt rail to the front face), slide sufficient bolts into the bolt channel on the eaves beam to suit the number of rafters on the roof (if not already done).



Using the marked out post centres locate the goal post assembly. Drill and securely fix the base plates down using suitable fixings (not supplied). Once the base plates are fixed drill 4 x Ø5.5mm pilot holes approx. 30mm from bottom of post and secure to base plates using the M6x35mm screws provided. (See next step prior fixing).

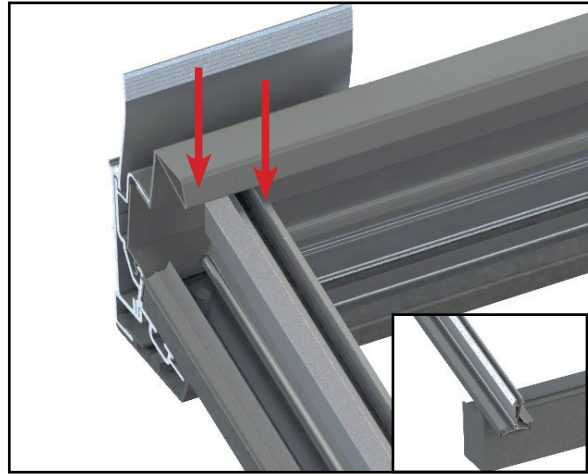


Identify Wall plate and ridge carriages, slide the carriages on to the wall plate and position in 100mm from each end and approx. 500mm centres. (The wall plate is cut to the eaves beam length not internal frame as starter bars need to fix to wall plate).

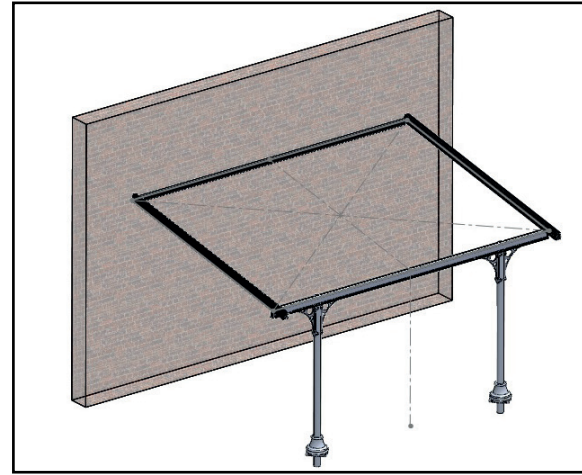


Before fixing wall plate ensure correct number of T-Bolts have been located in the bolt slot on the wall plate.

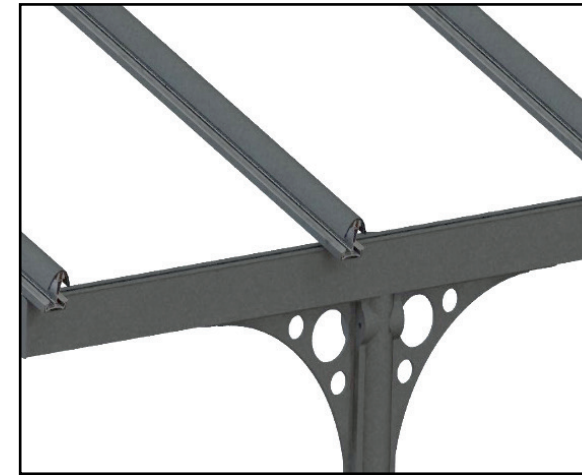
INSTALLATION STEPS.



Position 1st and last rafter over twin bolts in the eaves and wall plate, in line with end. Repeat at opposite end and loosely fasten in place with the M6 flange nuts provided.



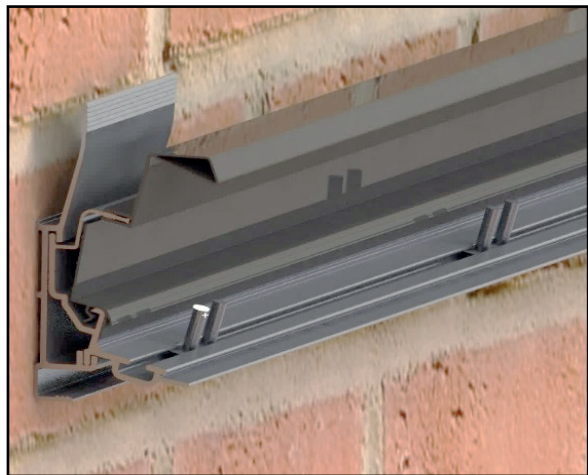
Carefully lift the wall plate and rafter's assembly into position locating the pre-drilled holes at the bottom of the rafter onto the t bolts on the eaves beam. Secure using M6 flange nuts provided. Square up eaves, posts and wall plate. Ensure wall plate is level and drill through wall plate and carriage into substrate and fix with suitable fixings (not supplied).



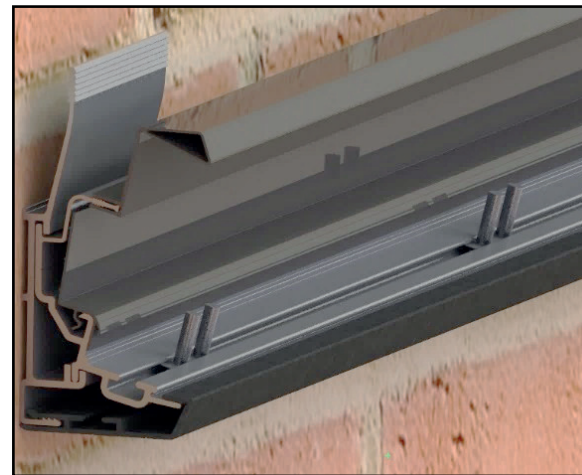
Re-Fit all the rafters at correct spacing's, ensuring square. Note: Standard overhang with gutter is 74mm prep from bottom of bars. For Veranda's with an overhang and no gutter, bottom prep is 258mm. Push PSU Glazing support into bolt slot in eaves channel between the rafters to support the glass at the eaves.



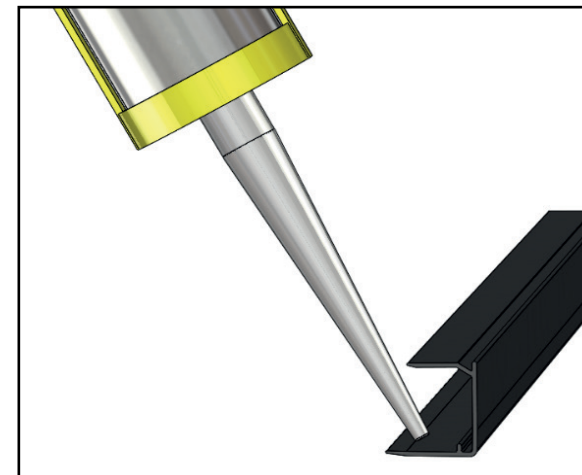
Push PSU glazing support into the eaves beam and wall plate bolt slots between the rafters to support the glass between rafters.



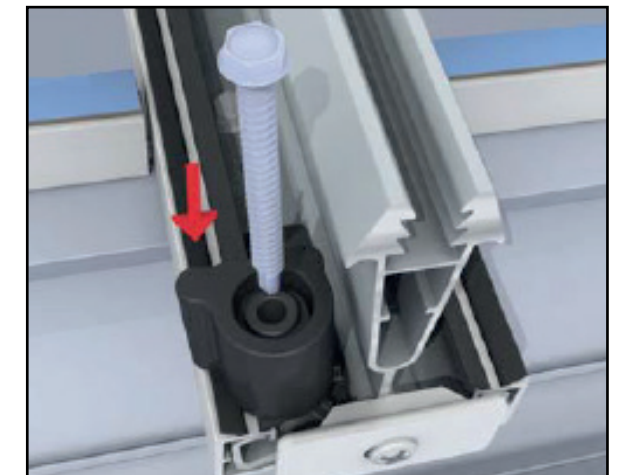
Once secured to host wall, remove rafters and fit both PVC baffles into the wall plate (full length).



Attached under cladding to Aluminium wall plate.

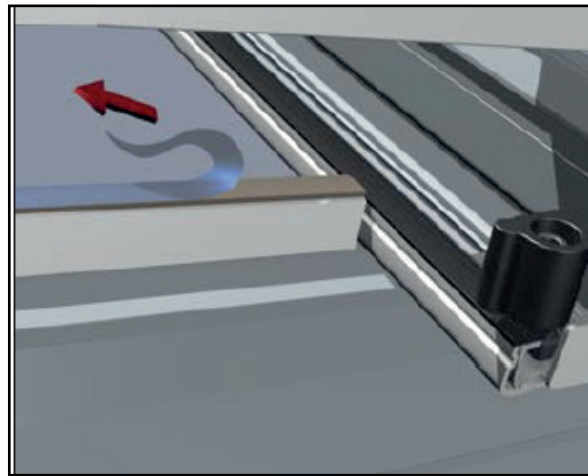


Take the glazing end profile and run a continuous bead of sealant (appropriate for glazing) immediately behind the coextruded gasket (along the full length). Now seal the space between the glazing end profile and the sealed unit at each end. The glazing end profile should be provided notched for use with glass.

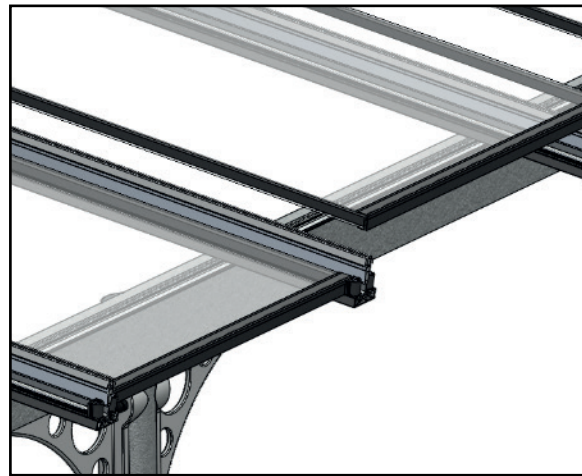


Snap off appropriate handed clip (LH illustrated here). Line rounded edge on base next to the central web of glazing bar, tucking clip under the gasket on the outer edge of the bar. Rotate into position and push grommet over as shown.

INSTALLATION STEPS.



Peel the edge of the support trim tape free (ready to be pulled away when the sealed unit is in position).



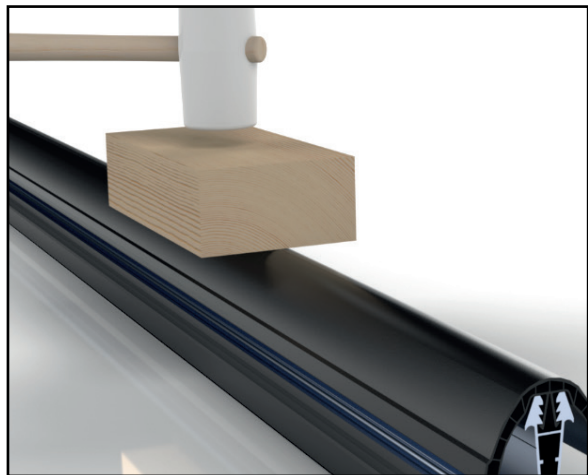
Centralise glass between rafters, fully remove the support trim protective tape and firmly press the glass down to seal on the support trims.



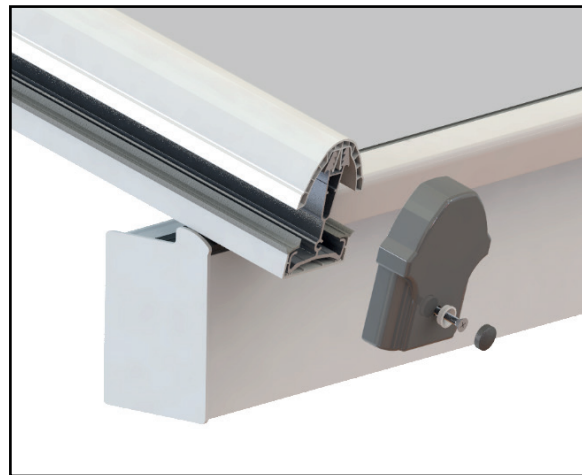
Apply sealant up and over each glazing bar top cap and along the glass/wall plate baffle. Fit glazing bar top cap and apply sealant to back face of wall plate end caps and push into position. Once installed lead flash from host wall onto wall plate top cap (not supplied).



If gutter has been supplied drill and fix gutter brackets to front of eaves beam at approx. 500mm centres and clip gutter in position, fit any end caps, joints and outlets.



Knock the glazing bar top capping on with a dead blow hammer, taking care when doing this, keep all trims wrapped until finished. Capping's are all numbered to its corresponding roof position.



With the glass in position and top cap firmly secured fit glazing bar end caps, washer and screw cover caps across roof.



If gutter has been supplied fix gutter brackets around the support leg and downpipe and tighten bolts (loosely supplied on brackets) **Note: if decorative feet and collars have been supplied, downpipe will need to stop short or require offset bends to clear.**



GFD Homes

Teesview, Sabatier Close,
Stockton-on-Tees | TS17 6EW

T: 01642 309 576

W: www.gfdhomes.co.uk

E: enquiries@gfdhomes.co.uk

 **GFD Homes**

 **@gfdhomes**