



CLADCO COMPOSITE DECKING AND JOISTS

Installation Guide,
Aftercare and FAQ's



CLADCO
DECKING®



CONTENTS

Storage, Colour and Guarantee	3
Tools	4
Prepare your Base	5
Timber Frame and Laying Decking Boards	7
Composite Frame and Laying Decking Boards	11
Finishing your Decking	14
Aftercare and Maintenance	16
FAQ's	18



STORAGE AND HANDLING

Cladco Composite Decking Boards should always be stored in a cool shaded spot on a flat and level surface which supports the whole length of the Board. It is recommended to store the Boards on a pallet to ensure they are not sat directly on wet or cold ground.

Wear protective gloves when handling the Boards and take care when lifting them. We recommend that a minimum of two physically capable persons carry the Boards. Always ensure any persons assisting with installation or handling is physically capable.



COLOUR

Cladco Composite Decking Boards are designed and manufactured to replicate the natural variants of a timber decking board.

It's recommended to purchase all Boards required for your project at the same time, as this will ensure colour consistency and ensure only one delivery cost. We recommend laying out all the Boards before installation to ensure a natural effect of grain and colour tone is balanced across the whole of your Decking. As with all materials exposed to direct sunlight, some natural weathering may occur over time.



10 YEAR GUARANTEE

Cladco Composite Decking Boards are supplied with a 10 year guarantee, subject to terms and conditions. Cladco Decking Boards should be installed as per this Installation Guide, and failure to do so may invalidate the guarantee. For further information, see www.cladcodecking.co.uk/cladco-profiles-limited-conditions-sale

TOOLS



Protective Equipment

When handling or carrying Decking Boards, it is advised to wear long sleeves and gloves. When cutting the Boards, we suggest you wear a protective dust mask, ear defenders and safety glasses. Knee pads are recommended to be worn when fitting Decking.



Tool Set

Standard everyday carpentry tools will be needed to complete the installation, including a tape measure, pencil, spacing tools and stanley knife.



Power Drill Or Driver

Standard power drills can be used when installing Composite Decking Boards. A standard Phillips screwdriver bit PH2 x 50mm should be used when working with Speeddekz 65mm Woodscrews and Speeddekz 50mm Screws.



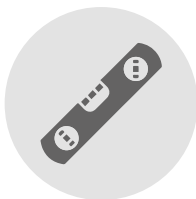
Sumogrip Adhesive

We recommend using Sumogrip adhesive to secure the Fascia Boards when concealing a support system beneath. When using the Sumogrip adhesive, do not allow the adhesive to get on the Decking Boards, as this can damage the finish of the deck.



Jigsaw Or Handsaw

Composite Decking Boards can be cut using any standard wood cutting tools. We recommend using a fine-toothed blade to get the cleanest finish to your cut edge.



Spirit Level And String

A spirit level is essential when installing Decking Boards to ensure a level support system. A spirit level ensures the Decking Boards are installed along a straight edge. A slight slope will allow for water run-off.



PREPARE YOUR BASE

How to make a suitable,
long-lasting base for your
Decking Boards



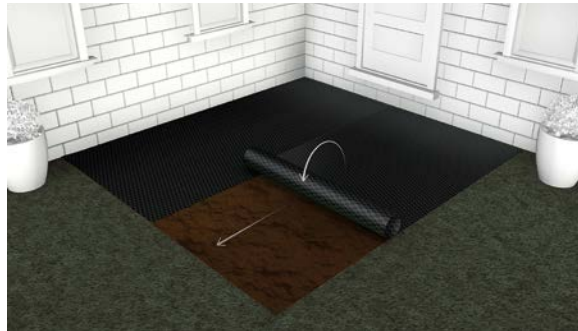
PREPARE YOUR BASE

CHOOSE FROM TWO BASES



CONCRETE BASE

A 100mm thick concrete base is recommended, with a slight slope for drainage to occur. The optimum slope should be around 5mm for every metre.

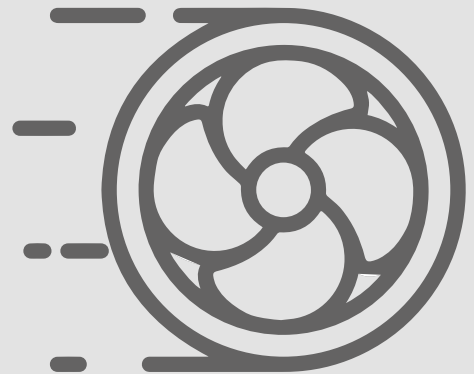


GRASS OR SOIL BASE

Remove the turf or soil until the ground is completely even, ensuring to remove any debris or rocks from the area. Cover the area of your site with a layer of Weed Mat to prevent any weed re-growth coming up under your Decking. If you need to overlap the Weed Mat, ensure you do this with enough fabric to prevent any gaps. Once cut and pinned into place, cover the Weed Mat with your desired coverage, such as chippings, bark or stones, so that none of the Weed Mat material is exposed.

AIRFLOW

Ensure your substructure design allows for significant airflow and ventilation. If the Decking is being installed on areas with poor ventilation, the Decking substructure must be installed on top of Joists which allow for a 47mm airflow gap.



TIMBER FRAME AND LAYING DECKING BOARDS

Create a strong, stable substructure
using Timber Joists to support your
Composite Decking



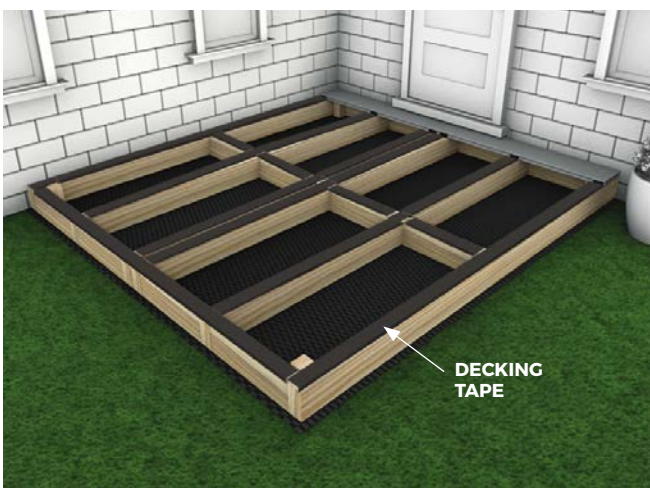
TIMBER FRAMEWORK



1 The maximum recommended space between Joist rows depends on the angle at which you intend to lay your boards in relation to the Joists, but should **never exceed 40cm**, please see diagram. Apply Deck Tape to the top surface and cut ends of the timber joists to protect them from moisture.

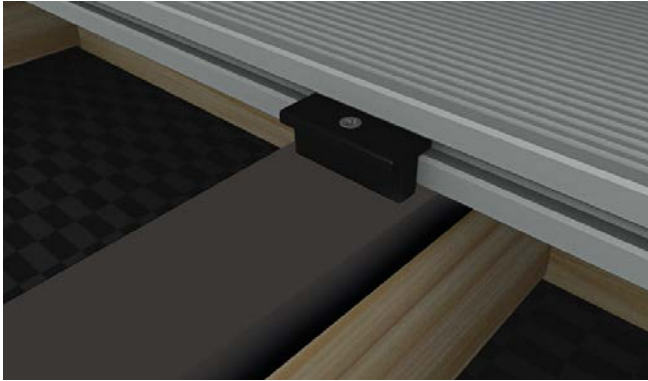


2 Starter Clips need to be fixed to the end of the Joists before laying the first Board. Place these at the end of each Joist, leaving a gap of 15mm between the wall and the Starter Clip to allow for expansion.



3 Our Composite Boards are easily fastened to the Joists of a supporting substructure with the help of our Stainless Steel Screw and plastic T-Clip System. Start at the outside of the area to be decked. Place your first Board and fix it to each Joist it crosses using a row of Starter Clips.

LAYING THE DECKING BOARDS



4 Slot T-Clips into the groove along the side of the Board and screw them into the supporting Joists with the screws provided, using one T-Clip for each supporting Joist. We recommend you use our Stainless Steel Wood Screws offering increased wear and less corrosion. **T-Clips will leave a 7mm gap between Boards.**



5 Fit your next Board by sliding it onto the T-Clips used to secure the first Board and fitting another set of T-Clips to secure the opposite side of the Board, using one T-Clip for each supporting Joist. Follow a similar process to fix subsequent Boards. The ends of Boards must be fully supported. No overhang or cantilever is advised.



6 At butt joints - where the ends of two Decking Boards meet, this may mean doubling up on supporting Joists, as you will need to ensure that each Board is held in place with its own T-Clip where they meet.

HAVE YOU THOUGHT ABOUT TRYING A DIAGONAL PATTERN?

Why not transform your space by installing in a diagonal pattern? This pattern is great for walkways or for the more compact decking areas, as it can elongate the space.

Simply lay the Boards at a 45-degree angle to the Joists, or build the Joists to a 45-degree angle within the frame. When using a diagonal design, the Joists must be **no more than 250mm** apart.

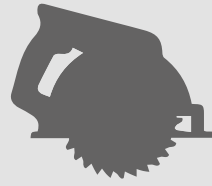


LAYING THE DECKING BOARDS



EXTREME TEMPERATURES

Extreme temperature changes could cause the Boards to expand or contract. Ensure Boards have had sufficient time to acclimatise to the temperature before installing. Do not install in extreme temperatures.

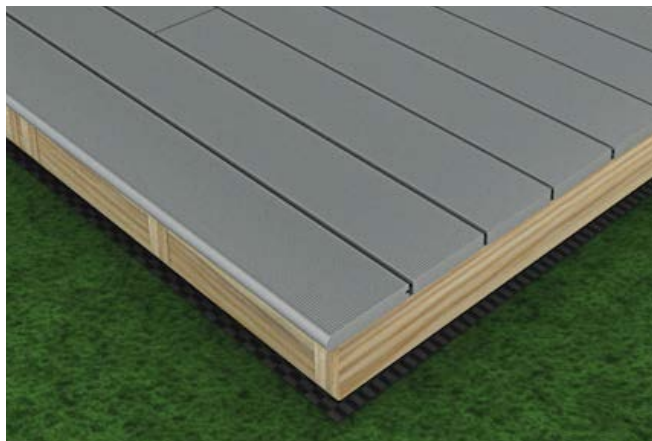


CUTTING

If Boards need to be cut to size, ensure the Boards are installed and secured immediately after cutting.



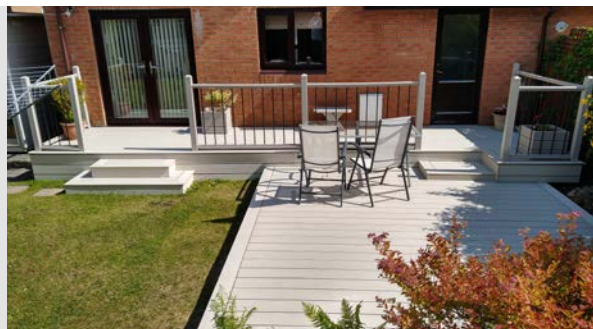
7 Having fastened your Boards, all that remains is to tidy up the sides of your new Deck with our Composite Skirting or Fascia Boards, which can be used to hide the unfinished ends of Boards and supporting Joists.



8 Our Hollow Decking End Caps are used to seal off the ends of Hollow Core Boards to give your Decking a professional finished look. End Caps are available in the same colours as all our Composite Decking Boards. Apply them to neatly complete your Decking project.

RAISED DECKING AREA

Steps and a raised Decking area can be included into your design using upright Timber or Composite Posts to support the raised framework. This will completely transform your Decking space into a dynamic, relaxing outdoor area.

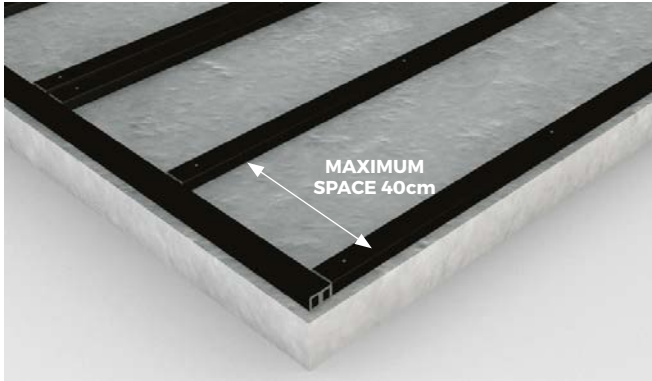


COMPOSITE FRAME AND LAYING DECKING BOARDS

How to use Composite Joists
for a durable and lasting
framework for your Decking



COMPOSITE FRAMEWORK



1 Boards must not be laid directly on the ground but should be fixed to the Joists. The maximum recommended space between Joist rows depends on the angle at which you intend to lay your Boards in relation to the Joists, but should **never exceed 40cm**, please see diagram Composite Joists should be screwed into the concrete base.



2 A gap of at least **15mm** should be left between the ends of Joists and a fixed object such as a wall, and **at least 8mm** between the ends of Joists at butt joints. These allow for proper drainage and temperature expansion.



3 A Starter Clip needs to be fixed to the end of the Composite Joists before laying the first Board. Place these at the end of each Joist where you will start to lay your Boards, leaving a gap of 15mm between the wall and the end of the Joist to allow for expansion.



4 Our Composite Boards are easily fastened to the Joists of a supporting substructure with the help of our Stainless Steel Screws and plastic T-Clip System. Start at the outside of the area to be decked. Place your first Board and fix it to each Joist it crosses using a row of Starter Clips.

LAYING THE DECKING BOARDS



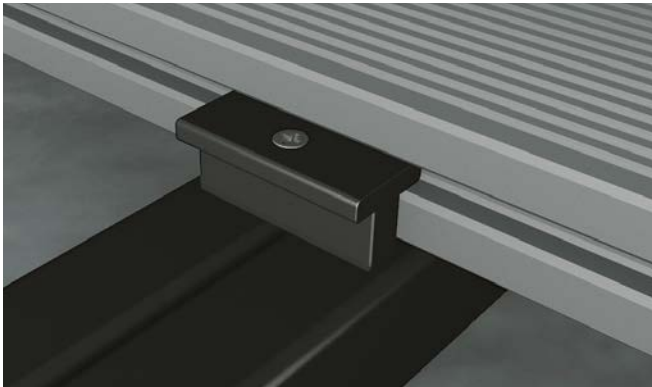
EXTREME TEMPERATURES

Extreme temperature changes could cause the Boards to expand or contract. Ensure Boards have had sufficient time to acclimatise to the temperature before installing. Do not install in extreme temperatures.



CUTTING

If Boards need to be cut to size, ensure the Boards are installed and secured immediately after cutting.



5 Slot T-Clips into the groove along the side of the Board and screw them into the supporting Joists with the screws provided, using one T-Clip for each supporting Joist. We recommend you use our Stainless Steel Wood Screws offering increased wear and less corrosion. **T-Clips will leave a 7mm gap between Boards.**



6 Fit your next Board by sliding it onto the T-Clips used to secure the first Board and fitting another set of T-Clips to secure the opposite side of the Board, using one T-Clip for each supporting Joist. Follow a similar process to fix subsequent Boards. The ends of Boards must be fully supported. No overhang or cantilever is advised.



7 At butt joints - where the ends of two Decking Boards meet, this may mean doubling up on supporting Joists as you will need to ensure that each Board is held in place with its own T-Clip where they meet. Once you get to the end of laying your last Board there are multiple ways of finishing off your Decking area. When using a Hollow Composite Board you will need End Caps to seal the ends of the Boards.

FINISHING YOUR DECKING

From Fascia Boards to
End Caps, here's how to
finish off your Decking



FINISHING YOUR DECKING

BULLNOSE AND FASCIA BOARDS

Made with the same material as the Decking Boards, Bullnose, Fascia Boards and Corner Trims can be used to finish your project to a high-end standard.



TO INSTALL YOUR BULLNOSE BOARDS

- Measure the edge of your Decking project and cut the Bullnose Board to the length required.
- Using Speeddekz 65mm Wood Screws, secure one end of your Board to the Joist below.
- Two Screws are recommended across the width of the Board at regular intervals.
- Screws should be inserted 13mm from the edges of the Board.
- After securing the front of the Board, secure the centre into the Joist below, followed by the end of the Board.
- Once the Board is securely in place, fix the Board at several intervals. It's recommended to use 26 Screws per 3.6m Board.



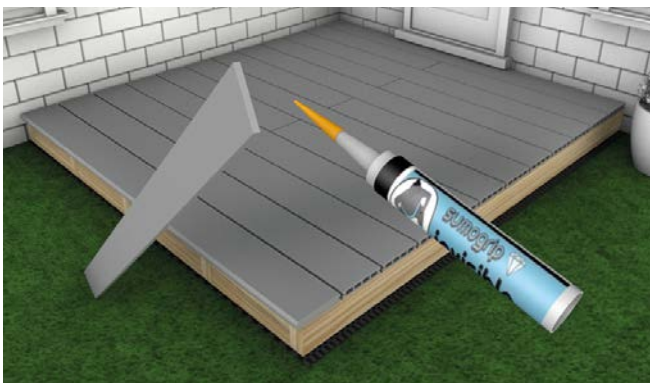
FASCIA BOARDS

Once the Bullnose Boards have been installed, you may wish to add the matching Fascia Boards to the Decking installation.

Fascia Boards can be fitted to the exposed Joists, hiding the base below and the underside of the deck.

TO INSTALL YOUR FASCIA OR CORNER TRIMS

- Using 50mm Speeddekz Screws, fix the ends of your Fascia Board to the Joist behind.
- Ensure the Screws are inserted 13mm from the edge of the Board.
- Continue fixings 300mm after the first Screw.
- Alternatively, you can use a strong adhesive (Sumogrip) to secure the Board.
- For optimum results, alternate between Screws and adhesive every 150mm until the Board is fastened securely.



SUMOGRIP

When using the Sumogrip adhesive, do not allow the adhesive to get on the Decking Boards, as this can damage the finish of the deck.

END CAPS

These may be a tight fit, and due to the natural fibres you may need to slightly sand them before placing on the ends of the Boards. Ensure the End Caps are not forced into place as this may cause them to snap.



AFTERCARE AND MAINTENANCE

Keep your Composite Decking looking its best for years to come





AFTERCARE AND MAINTENANCE



SNOW AND ICE

Take care when walking over your Decking in extreme weather conditions, such as snow or ice, as this may cause the deck to become slippery.

If using de-icer, ensure that the product contains calcium chloride, as this will not damage Composite Decking. It may leave a slight residue behind, but this can be easily cleaned away. Always check on inconspicuous areas before using any chemicals on Composite Decking.

Do not use grit or sand, as well as metal or plastic spades, on your Decking as they may scratch the surface.



MAINTAINING YOUR COMPOSITE DECK

Cladco Composite Decking has a 10 year guarantee and is stain, scratch and fade resistant. In some cases, pressure washing may be required to remove dirt.

For standard everyday debris such as plants, leaves, berries, animal droppings, simply brush your deck free of any debris.

Discolouration can be caused by chemicals found in everyday household products, such as suntan lotion or insect repellent. Take care when using these products near your Composite Decking.

FREQUENTLY ASKED QUESTIONS

Where can I install my Decking?

Cladco Composite Decking is very practical for any outdoor space (subject to building control and a structural framework).

Cladco Composite Decking can be installed on grass, soil or concrete, provided a suitable frame has been created below.

Can I use a pressure washer?

A pressure washer can be used to clean your Composite Decking area. We recommend using a pressure washer with a psi of no greater than 2,000.

A fan tip should be used with a 40-60 degree spread, keeping the head 250-300mm away from the surface. Please note that using pressure washers may increase the chance of screw holes becoming more visible. Always test over an inconspicuous area first. Direct, prolonged pressure washing could damage the surface of the Boards and should be avoided.

Will my Decking get hot in the sun?

As with all Composite products exposed to the sun, they can become hot over prolonged periods. Darker colours can feel hotter in areas exposed to direct sunlight, and so footwear may be necessary in these circumstances. Special caution should be taken when using Decking in areas with prolonged sun exposure and next to glass.

Can I use a fire or patio heater on my deck?

When using a fire pit or patio heater, it is always recommended to test this with an offcut of a Board first.

Any embers or heat that come into contact with the Boards should be removed immediately. Embers or heat may damage the integrity of the Board and cause marks to the surface.

Can I use a standard Board as an edging piece?

Yes, but only where the edge is only aesthetic, such as a balcony edge, if this is your preferred finishing option. However, where the edge is likely to sustain impact, such as a step, we do not recommend using a standard Board. Bullnose edging Boards have been specifically designed with high impact

in mind and as such have a thicker surface to withstand the knocks and scrapes associated with step edges and other applications.

How much does Composite Decking weigh?

A single 4m Solid Composite Decking Board weighs approximately 20.92kg, and Hollow Boards weigh approximately 11.2kg. A single 2.4m Solid Composite Decking Board weighs approximately 12.55kg, and Hollow Boards weigh approximately 6.72kg.

What colours are available?

Unlike traditional timber decking, Composite Decking Boards are available in a range of eight colours, designed to match or contrast existing buildings and architecture.



Can I order a Sample?

You can order a Sample Pack of Decking via the Cladco website: www.cladcodecking.co.uk/samples



01642 309 600

enquiries@gfdliving.co.uk

www.gfdliving.co.uk

CLADCO
DECKING®